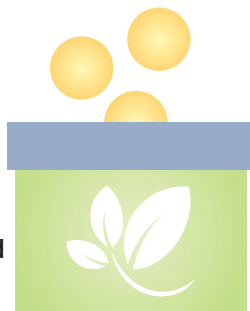


# Make an IMPACT



Directing a contribution through the LCCF is easy and impactful. Your gift **CREATES** or **ADDS TO** a charitable fund to benefit causes important to you now and for years to come.

#### To CREATE your own fund:

A fund may be established with as little as \$5,000. However, within five years a total of \$25,000 must have been contributed.

#### To ADD TO an existing fund:

Simply select a fund that matches your interest and contribute ANY dollar amount you wish. The amount contributed will be added to the fund endowment providing larger annual grant amounts.

### CREATE YOUR OWN FUND

When you create your own fund there are endless possibilities on how you can impact Lapeer County's future. You can choose which fields of interest or local organizations you want to support. Whether you wish to remain highly involved in your charitable giving or choose to allow the Foundation to respond to changing community needs – we have a fund option just for you!

### SCHOLARSHIP

Scholarships may be established to memorialize or honor someone, celebrate your alma matter, or promote a chosen career field. Scholarships may be awarded to students graduating from Lapeer County school districts or pursuing post-graduate studies. You determine the criteria – we manage the rest!

### POWER OF ENDOWMENT

The LCCF Board of Trustees manages several funds, each of which provides grants to local nonprofits, schools, and public entities to address community needs. Anyone may contribute any amount to these funds. No gift is too small to make a difference. Over time, through the power of endowment, these tax-deductible contributions grow which increases the size and impact of grant funds available.

### ORGANIZATIONS AND AGENCIES

Nonprofits, schools, and government entities may start a fund with the Foundation for the express purpose of supporting their organization. Each year the fund's spendable amount may be directed back to the organization.

### LEAVE A LEGACY

Estate planning is often overlooked as a way to contribute to your favorite charities. Planned giving through bequests ensures that the charitable causes that mean the most to you during your lifetime continue to be supported. The LCCF team is here to provide you and your professional advisors with the best and most relevant charitable gift solutions.



235 W. Nepessing St., Lapeer, MI 48446

810.664.0691

[www.lapeercountycf.org](http://www.lapeercountycf.org)



Excellence. Accountability. Impact.™



# Give today. Impact tomorrow.



[www.lapeercountycf.org](http://www.lapeercountycf.org)

## BUILD Community.

The Lapeer County Community Foundation is a nonprofit organization created by and for the people of Lapeer County. Many of today's solutions result from yesterday's giving. In 1996, the Lapeer County Community Foundation was started with a \$20,000 gift to create a permanent community endowment fund. Since then, we have grown to represent 63 funds, over \$10 million in assets, and have given over \$3.7 million back into our local Lapeer County communities.

## GIVE Today.

Since our inception, we have worked with people like you, giving gifts from \$5 to \$500,000 to help ensure there will always be resources available in the future to meet the community's needs and promising opportunities.

Giving is personal. We understand that. We combine personalized service, local expertise, and community leadership to help donors meet their charitable goals.

The result?

- Giving today is easier and more efficient
- Your dollars remain LOCAL
- Access to an expert staff with an in-depth understanding of the issues, opportunities, and resources that shape our community.
- Opportunities to impact those local organizations and causes you care about most
- You can contribute at whatever level of giving fits your budget. Large or small – each donation has an immediate impact.

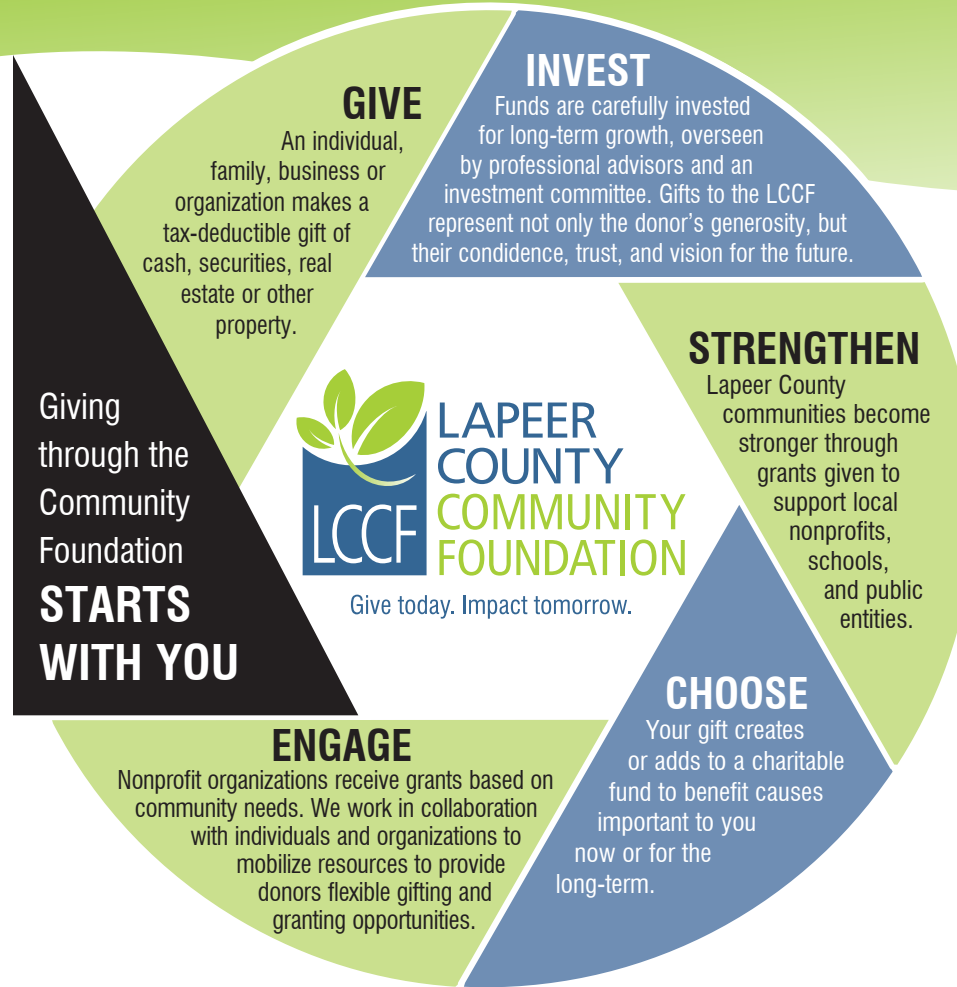
## IMPACT Tomorrow.

As the Lapeer County leader in promoting philanthropy to strengthen our communities, we work in collaboration with individuals and organizations to mobilize resources to meet their goals and objectives. It's all about relationships. We invest not only your dollars, but also our time, in building these long-term relationships. Working together, the Foundation leads and supports projects in the areas of:

- Education
- The Arts
- Health & Human Services
- The Environment
- Recreation
- Economic Development

By giving today, you impact the quality of life in Lapeer County today, tomorrow, and for future generations!

**Contact us today to talk about how YOU can impact the future of Lapeer County!**



Lapeer County Community Foundation



## Women's Fund

The Women's Fund was established through the vision of 100 Founders as a unique legacy of women helping women in Lapeer County. Through its membership and donor support, the Women's Fund provides grants supporting and enhancing the lives of women and their children in areas of health, human service, education, and enrichment. By connecting women from all backgrounds and stages of life, they have an opportunity to make a lasting impact while continuing the tradition of leadership and service to the Lapeer County community just as their mothers and grandmothers did before them.

Lapeer County Community Foundation



the YAC is a group of youth philanthropists who review and approve grants addressing youth related projects and identified needs. YACers meet monthly and also organize and participate in special events, community service projects, and youth leadership development opportunities.

The Youth Advisory Committee (YAC) was established by the LCCF in 1997 as a result of a challenge grant from the W. K. Kellogg Foundation. Comprised of 7th-12th grade students

representing each school district within Lapeer County,



*The future of philanthropy starts with our youth.*